

SCOOBY-DOO!

TEAM-UP



FISCH
BRIZUELA
RIESCO

THERE IT IS--THE
KEELER RUBY! ARCHAEOLOGISTS
FOUND IT LAST MONTH--THE **LARGEST**
RUBY IN THE WORLD.

JINKIES! BUT
WHY DO **WE** GET
TO SEE IT WHILE THE
MUSEUM'S CLOSED,
FRED?

THE MUSEUM
CURATOR CALLED
US FOR **HELP**--
BECAUSE THE RUBY'S
CURSED.

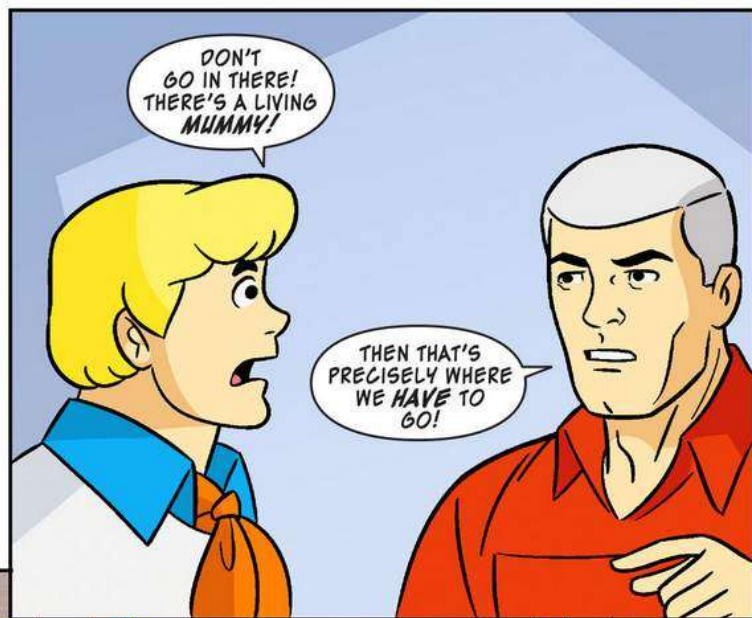
R-R-RURSED?!

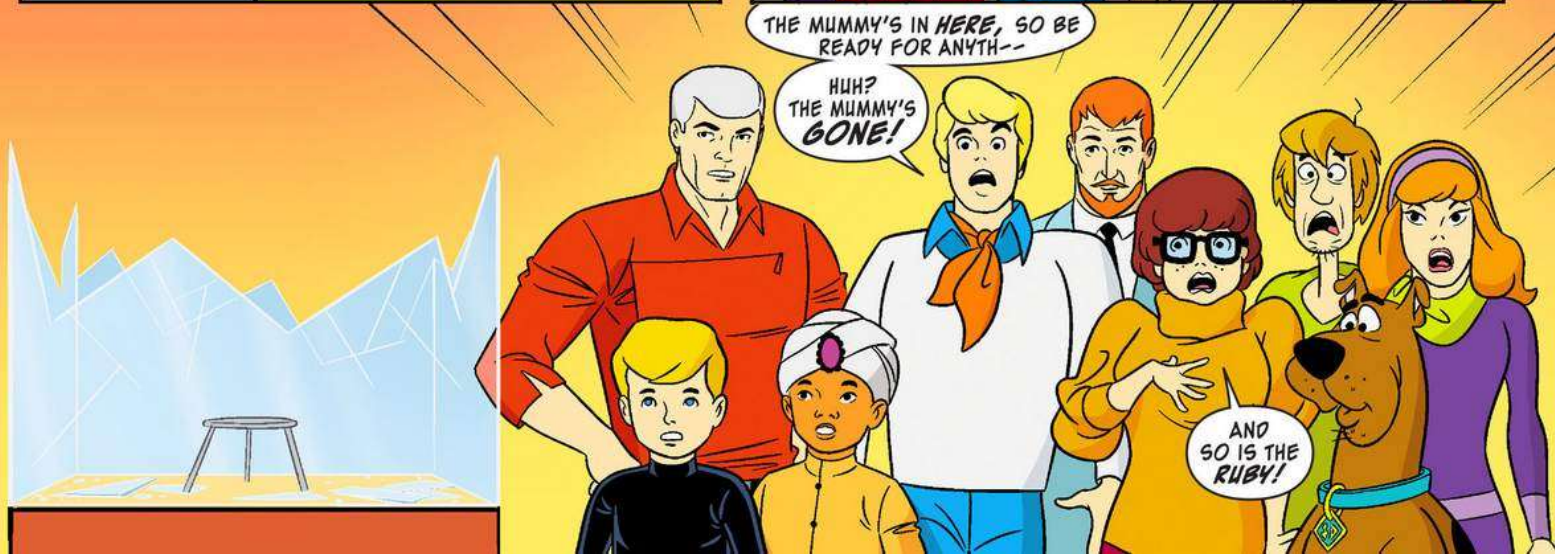
WHAT
KIND OF
CURSE?













THAT MUMMY
CAN'T HAVE GOTTEN
FAR. LET'S **SPREAD
OUT** THROUGH THE
MUSEUM AND FIND
IT!

"**FIND IT**"?
CAN'T WE, LIKE, STAY
HERE AND **HIDE** UNTIL IT
GOES AWAY?



DON'T
WORRY, THE
MUMMY'S
PROBABLY NOT
REAL.

HOW
CAN YOU,
LIKE, BE SO
SURE?

IT'S NOT OUR
FIRST MUMMY. MOST OF THE
TIME, IT JUST TURNS OUT TO BE A
PLOT BY **ALIENS** OR **FOREIGN
SPIES** OR SOMETHING.

ALIENS
AND SPIES?

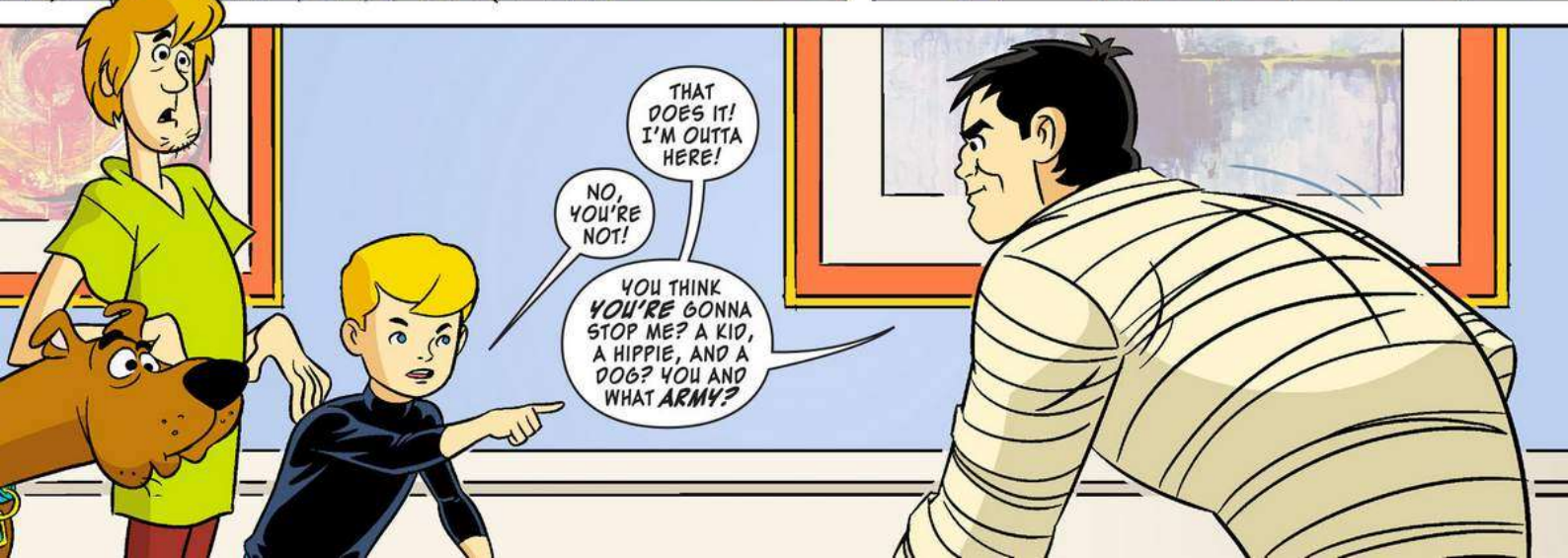
≡GULP≡

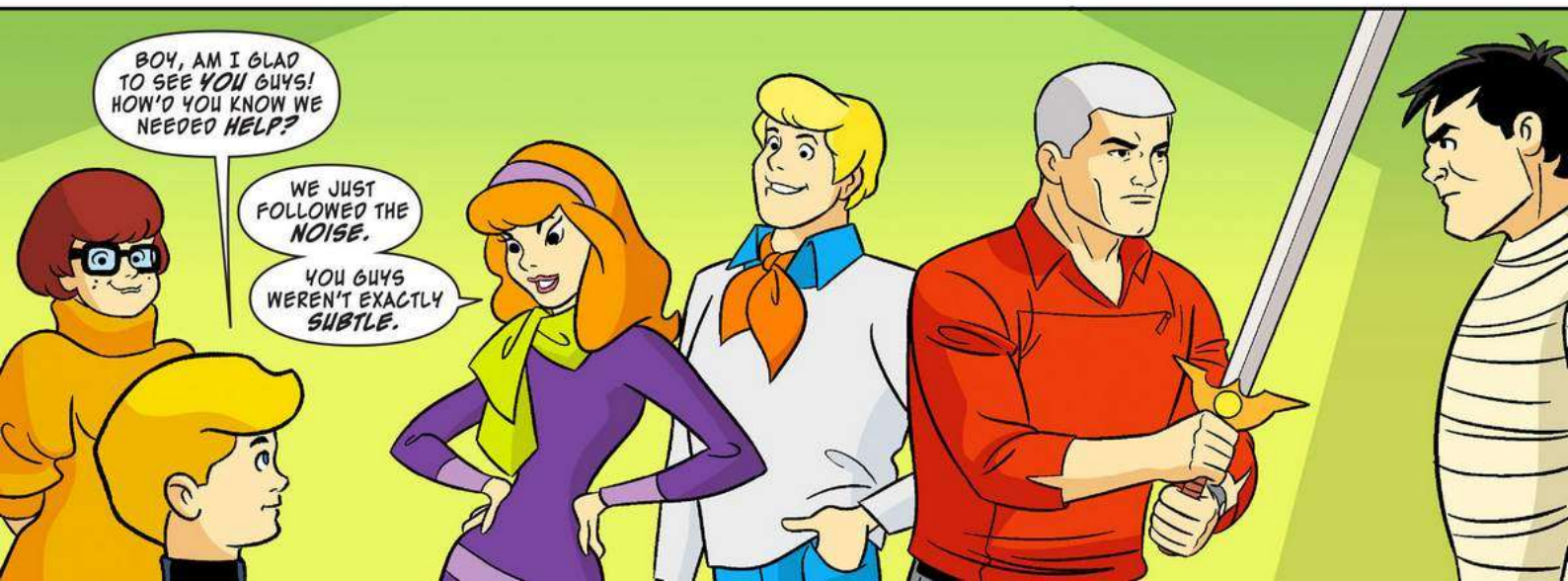
HALF OF
OUR MUMMIES JUST
TURN OUT TO BE
REALTORS...

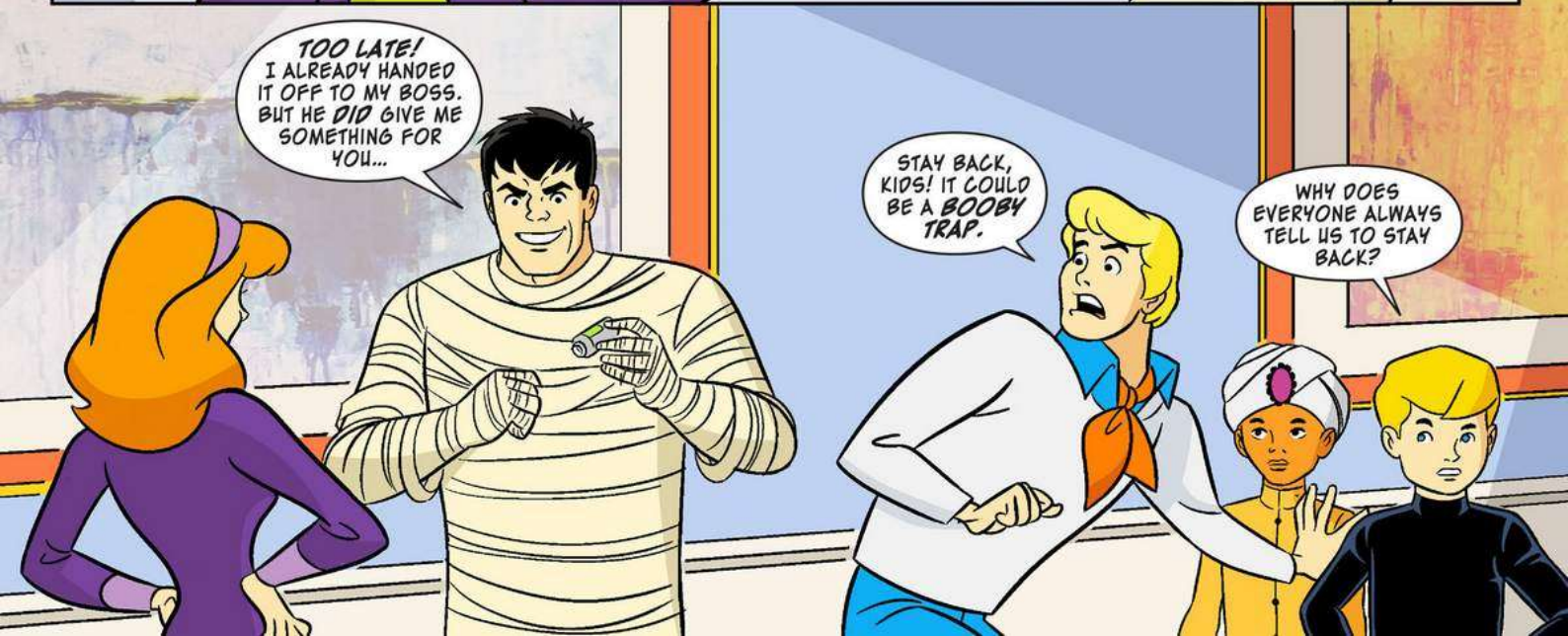




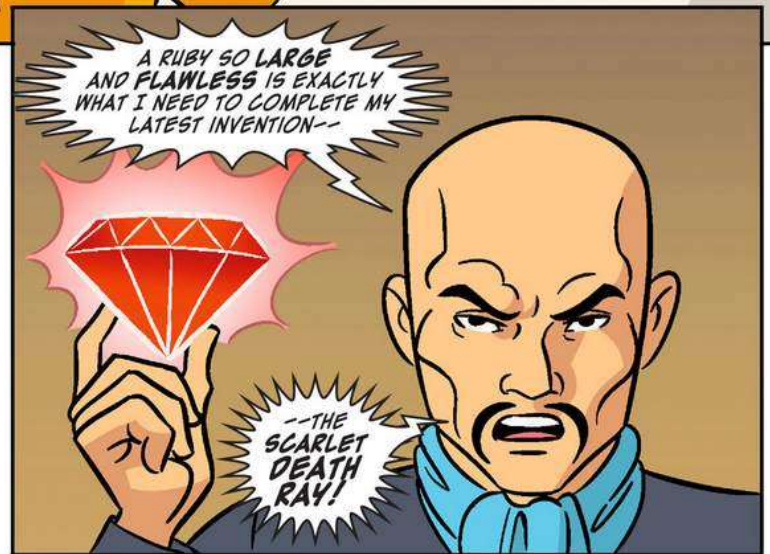




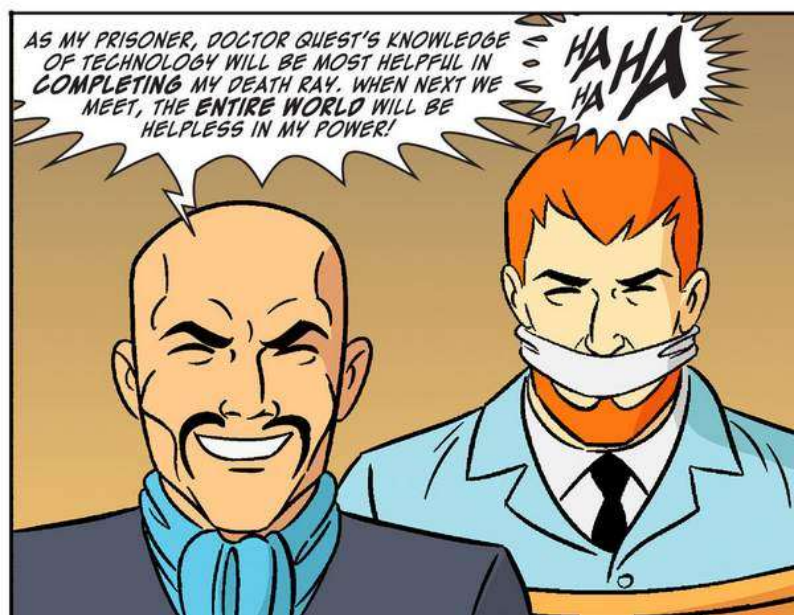
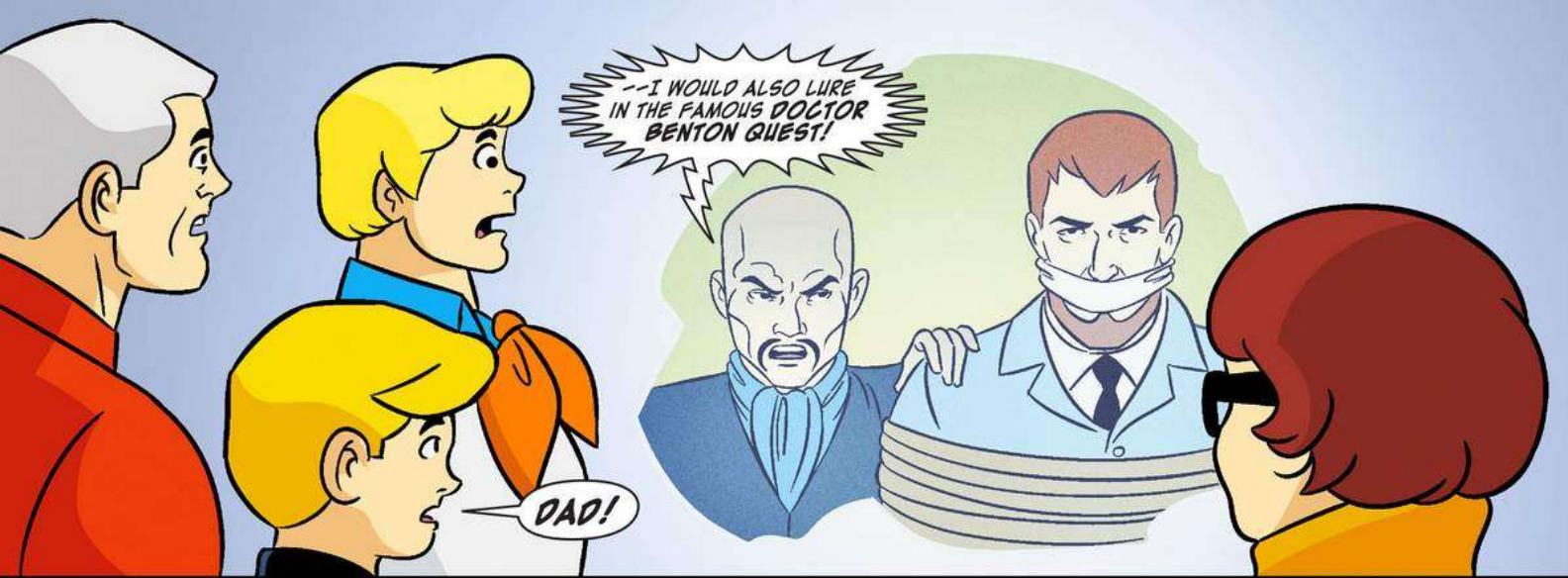














I'LL BET
DAD MEANT THAT HE
ACTIVATED THE **TRACKING**
DEVICE HIDDEN IN
HIS SHOE!

IF I'M
RIGHT, THIS
RECEIVER CAN
TELL US WHERE
TO GO.

YOU
KEEP TRACKING
DEVICES IN YOUR
SHOES?

WHEN YOU'VE
BEEN KIDNAPPED
AS MANY TIMES AS **WE**
HAVE, IT JUST MAKES
SENSE.

GOT IT!
DOCTOR ZIN WASN'T
KIDDING ABOUT HIS
SUPERSONIC FLYER.
THEY'RE ALREADY **OFF-**
SHORE AND MOVING
FAST!

JUDGING FROM
THEIR FLIGHT PATH, IT
LOOKS LIKE THEY'RE
HEADING STRAIGHT
FOR **LA ISLA DE LOS**
MONSTRUOS--







THERE IT IS--
THE ISLAND OF
MONSTERS!

HOW
CAN YOU
TELL?



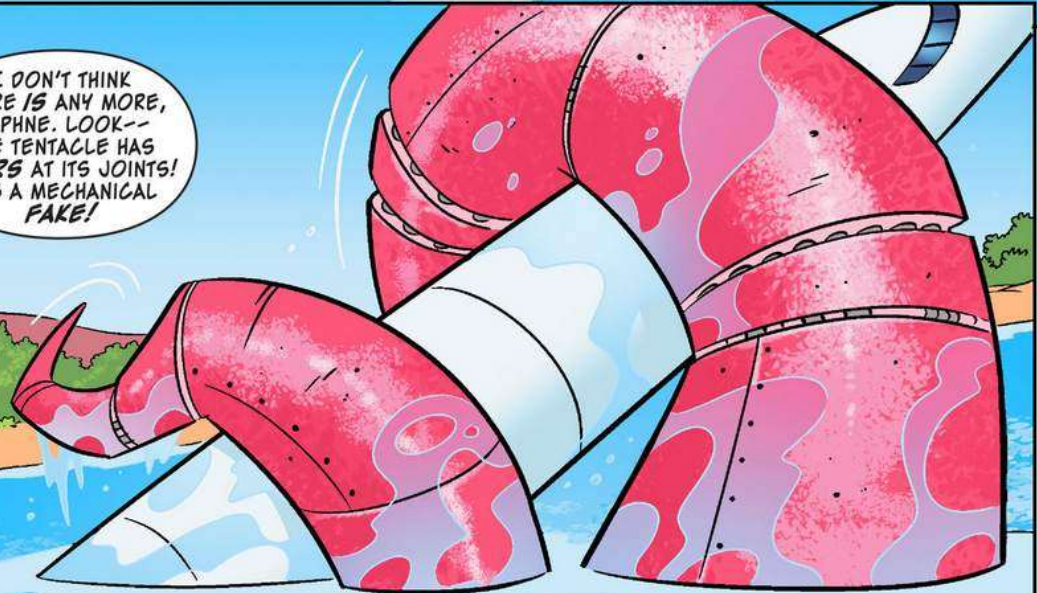




WOW! IF THAT'S JUST **ONE** TENTACLE, I DON'T WANT TO SEE THE **REST** OF THAT CREATURE!



I DON'T THINK THERE **IS** ANY MORE, DAPHNE. LOOK-- THE TENTACLE HAS **GEARS** AT ITS JOINTS! IT'S A MECHANICAL FAKE!







GIANT LIZARDS!

SEE?
RUNNING AWAY
IS PART OF OUR
PROCESS!



THEY'RE TOO FAST!
WE NEED TO GET OUT
OF REACH!

HEAD
FOR THE
TREES!

WE
WON'T GET
THERE IN TIME!
BUT WE DON'T
NEED TO!





